

Advanced Nursing Practice: Improving Healthcare Outcomes in Northern Ireland



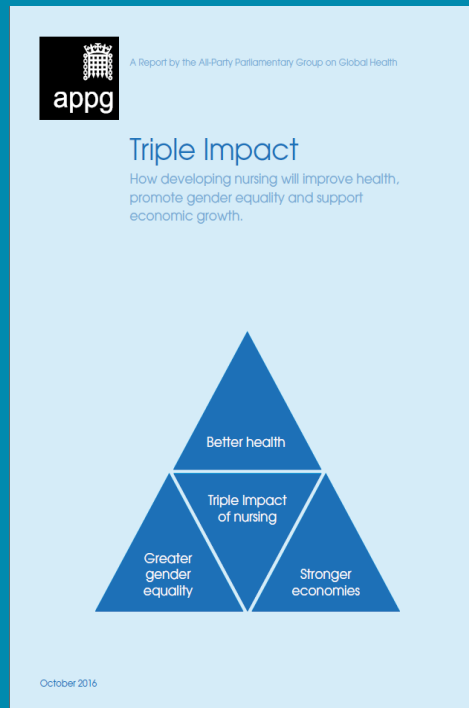
***Professor Charlotte McArdle
Chief Nursing Officer
&
Heather Finlay
Deputy Chief Nursing Officer***



ESNO Congress 24-26 February 2021



Global & Strategic Context: Advanced & Specialist Roles



Workforce Investment

Recruitment & Retention

Developing New Roles



70+ years of Nursing and Midwifery at WHO



Nursing and Midwifery in the History of the World Health Organization

1948-2017



- 1949 WHA2.77: Expert Committee on Nursing
- 1950 WHA3.67: Increasing and improving the supply and
- 1977 WHA30.48: The role of nursing/midwifery personnel in PHC teams
- 1983 WHA36.11: The role of nursing/midwifery personnel for Health for All
- 1989 WHA42.27: Strengthening nursing/midwifery for health for all
- 1992 WHA45.5: Strengthening nursing and midwifery for health for all
- 1996 WHA49.1: Strengthening nursing and midwifery
- 2001 WHA54.12: Strengthening nursing and midwifery
- 2006 WHA59.27: Strengthening nursing and midwifery
- 2011 WHA64.7: Strengthening nursing and midwifery
- 2019 WHA 72(19): The International Year of the Nurse and the Midwife

The Health Workforce 2030

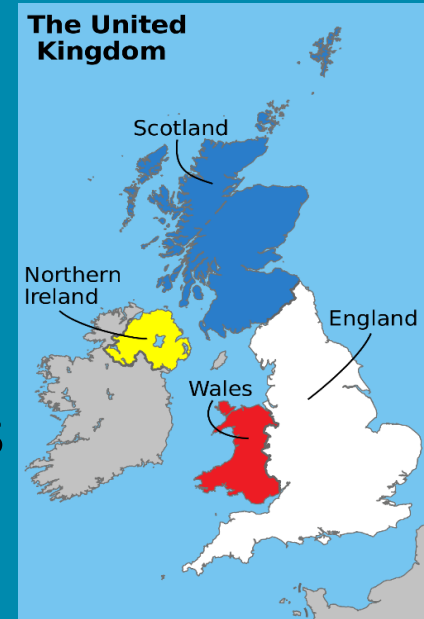


UK Regulatory Context

Nursing & Midwifery Council (NMC)

UK Professional Regulator

- Four Country Regulation
- Specialist nursing practice is regulated
- Advanced nursing practice is not regulated
- **NMC Review:** Specialist practice qualifications
Pending consultation: New draft standards
- Future regulation of advanced practice ???



Northern Ireland Approach to Nursing Practice

- ✓ **Defined Roles**
- ✓ **Distinct levels of Practice**
- ✓ **Distinguishing Characteristics**
- ✓ **Regional Standardisation**

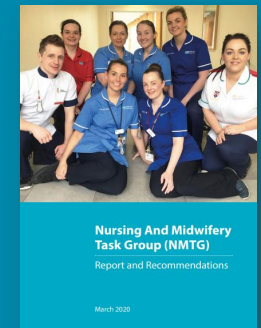
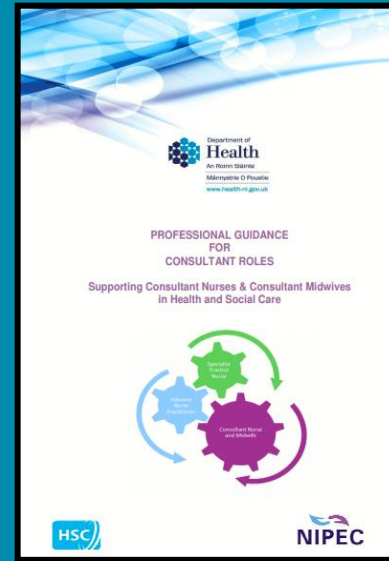
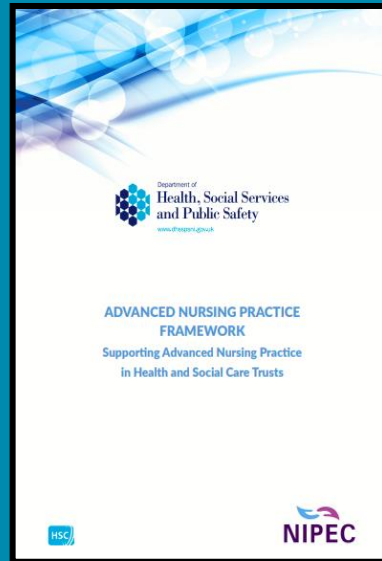


Northern Ireland Approach

Specialist Practice

Advanced Practice

Consultant Practice



Transformation Health & Social Care Services

Key enablers for leading transformational change & improving health outcomes



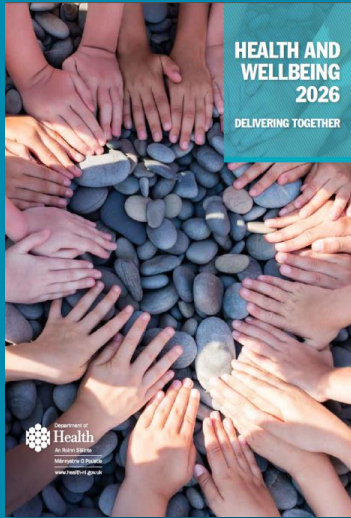
Components of Practice	Specialist Nurse	Advanced Nurse Practitioner	Consultant Nurse & Consultant Midwife
Clinical Practice & Scope of Role	<ul style="list-style-type: none"> • work as member of a team, within a defined area of nursing practice; • undertake comprehensive assessments with differential diagnoses and may diagnose; • prescribe care and treatment or appropriately refers and may discharge; and • contribute to education, innovation and research. 	<ul style="list-style-type: none"> • work autonomously using a person-centred approach within the expanded scope of practice; • undertake comprehensive health assessment with differential diagnosis and will diagnose; • prescribe care and treatment or appropriately refers and/or discharges patients/clients; • provide complex care using expert decision-making skills; and • act as an educator, leader, innovator and contributor to research. 	<ul style="list-style-type: none"> • exercise advanced levels of clinical judgment, knowledge and skill and possess a high degree of personal/professional autonomy to enable complex decision-making; • use an innovative, person-centred approach to contribute to better outcomes and experience for patients/clients, families, carers or communities; • provide strategic professional leadership to support improvements in professional practice, standards of care and effective identification and management of risk within the organisation's clinical governance framework; • act as an educator for colleagues wishing to develop advanced knowledge and skills and establish university links to provide academic and research support; • develop and influence professional practice locally and nationally through the promotion and evaluation of evidence-based practice, research and service development; • present and contribute to local/national professional conferences, special interest groups/working parties, research and relevant publications; and • lead and facilitate multi-professional working.



Components of Practice	Specialist Nurse	Advanced Nurse Practitioner	Consultant Nurse & Consultant Midwife
Service Improvement	<ul style="list-style-type: none"> • contribute to policy and service development • contribute to service improvement initiatives. 	<ul style="list-style-type: none"> • responsible for policy development, implementation and service development; and • lead on service improvement initiatives. 	<ul style="list-style-type: none"> • work with DoH and other relevant organisations to influence policy development and service/quality improvement; • lead on service/quality improvement initiatives at local, regional and national level; and • lead innovations across multidisciplinary teams.
Education Requirement	<ul style="list-style-type: none"> • NMC registration • BSc (Hons) in Nursing or other Health Related Subject • NMC recorded Specialist Practice qualification; and • may require an NMC recorded Non-Medical Prescribing qualification. 	<ul style="list-style-type: none"> • NMC registration; • completed a Master's programme in the relevant area of practice; and • NMC recorded Non-Medical Prescribing V300. 	<ul style="list-style-type: none"> • NMC registration; • completed a Master's Degree as a minimum; • completed a post-graduate qualification within the relevant area of practice; • may require a NMC recorded Non-Medical Prescribing qualification; and • pursuing continuous professional and scholarly activity.
Supervision Requirement	<ul style="list-style-type: none"> • Professional Nursing supervision 	<ul style="list-style-type: none"> • Supervision relevant to area of practice • Professional nursing supervision 	<ul style="list-style-type: none"> • Supervision relevant to area of practice • Professional nursing supervision



Advanced Nursing Practice



Northern Ireland
Advanced Nursing
Practice Framework

Masters in Advanced
Nursing Practice
Developed

ANP Pathways
Primary Care, Children's,
Adult, Mental Health,
Emergency Care

*Video clip of an Advanced Nurse
Practitioner in Primary Care*

[Nicola Brown | NIPEC \(hscni.net\)](https://www.nipec.ni.gov.uk/)

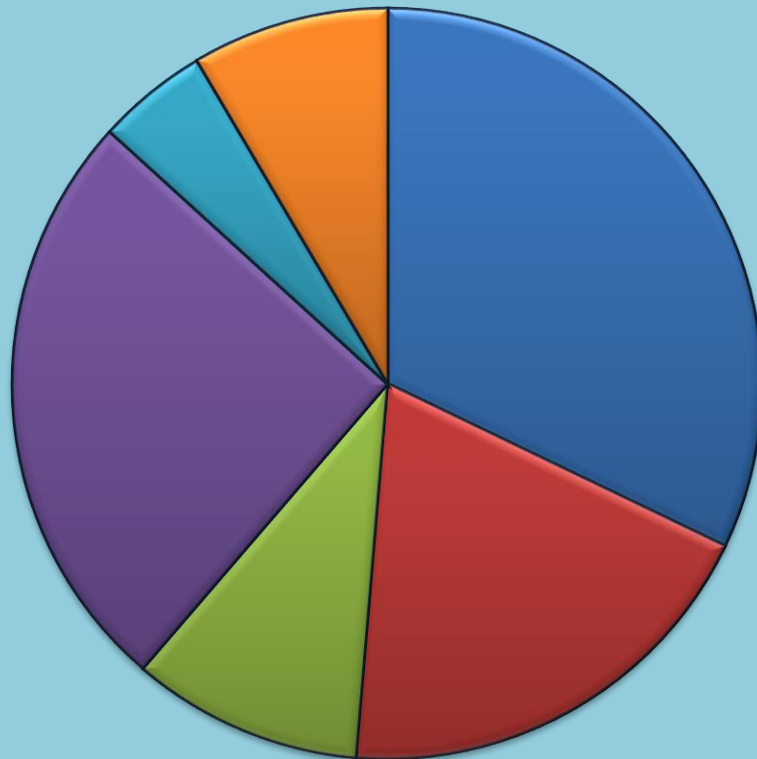


Advanced Nurse Practitioner Primary Care

Activity 5-16 October 2020

1143 Consultations

56 Clinical Sessions



■ New Patients 659

■ Review Patients 394

■ Telephone Liason 204

■ Acute Scripts 522

■ Investigations/follow up 98

■ Onward referral 174



THANK YOU

